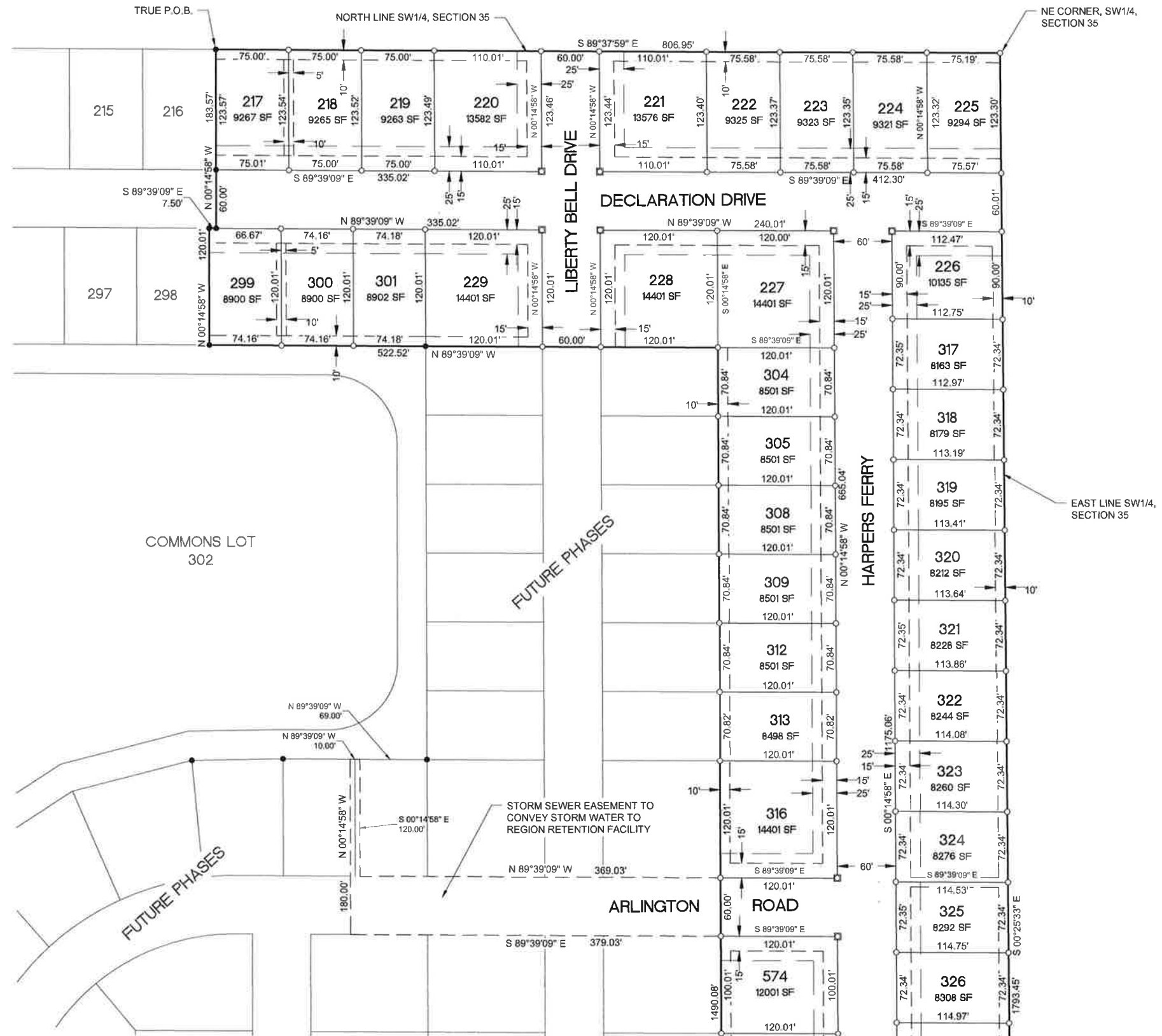


LEGEND

	BOUNDARY OF PLAT
	PROPOSED LOT LINE
	EASEMENT LINE
	SETBACK LINE
	FUTURE PROPERTY LINE
	POINT OF BEGINNING
	SURVEYED DIMENSION
	DIMENSION OF RECORD
	SET 1/2" x 30" IRON WITH PLASTIC CAP "MSA"
	FOUND IRON ROD
	SET IRON ROD IN CONCRETE MONUMENT

PRESENTED FOR RECORDING BY:
RETURN TO:



SPACE RESERVED FOR
RECORDERS STAMP

PROJECT NO.	15924002	SCALE: AS SHOWN	NO.	DATE	REVISION	BY
PROJECT DATE:		DRAWN BY: NWL/RJS	1	2-18-19	AFFIDAVIT	NWL
F.B.:		CHECKED BY: DEA				
PLAT DATE:	2/18/19	P:\159009e\15924002\15924002\CADD\Survey\Final Plat\15924002-Final Plat Affidavit.dwg				

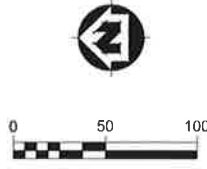
MSA ARCHITECTURE | ENGINEERING | ENVIRONMENTAL FUNDING | PLANNING | SURVEYING
 201 W Springfield Ave Champaign, IL 61820
 (217) 352-6976 (877) 352-0081
 www.msa-ps.com
 © MSA Professional Services, LLC
 Design Firm Registration Number: 184-06020 Expires April 30, 2019

LIBERTY ON THE LAKE II PHASE 2
 R.B.SAVOY
 VILLAGE OF SAVOY, ILLINOIS

FINAL PLAT

FILE NO.	15924002
SHEET	2 OF 3

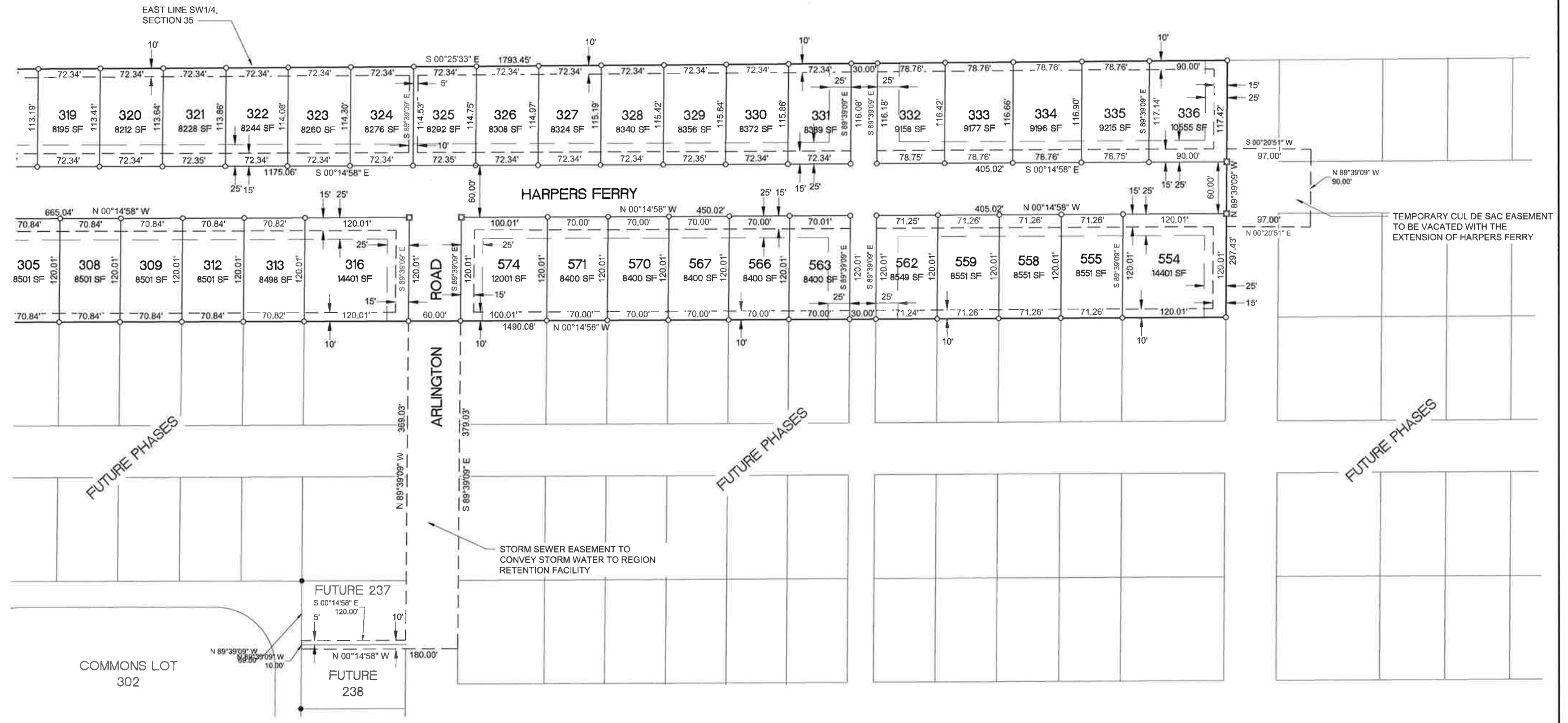
LEGEND



- BOUNDARY OF PLAT
- PROPOSED LOT LINE
- EASEMENT LINE
- SETBACK LINE
- FUTURE PROPERTY LINE
- POINT OF BEGINNING
- SURVEYED DIMENSION
- DIMENSION OF RECORD
- SET 1/2" x 30" IRON WITH PLASTIC CAP "MSA"
- FOUND IRON ROD
- SET IRON ROD IN CONCRETE MONUMENT

PRESENTED FOR RECORDING BY:
RETURN TO:

SPACE RESERVED FOR
RECORDERS STAMP



PROJECT NO.	SCALE	AS SHOWN	NO.	DATE	REVISION	BY
15924002	AS SHOWN					
PROJECT DATE:	DRAWN BY:	NWL				
F.B.:	CHECKED BY:	DEA				
PLOT DATE: 11/13/18, P:\15924002\15924002\CADD\Survey\Final Plat\15924002 Final Plat.dwg						

MSA
ARCHITECTURE | ENGINEERING | ENVIRONMENTAL
FUNDING | PLANNING | SURVEYING
201 W Springfield Ave Champaign, IL 61820
(217) 352-6976 (877) 352-0081
www.msa-ps.com
© MSA Professional Services, a company of MSA
Design Firm Registration Number: 184-066020 Expires April 30, 2019

LIBERTY ON THE LAKE II PHASE 2
R.B.SAVOY
VILLAGE OF SAVOY, ILLINOIS

FINAL PLAT

FILE NO
15924002
SHEET
3 OF 3