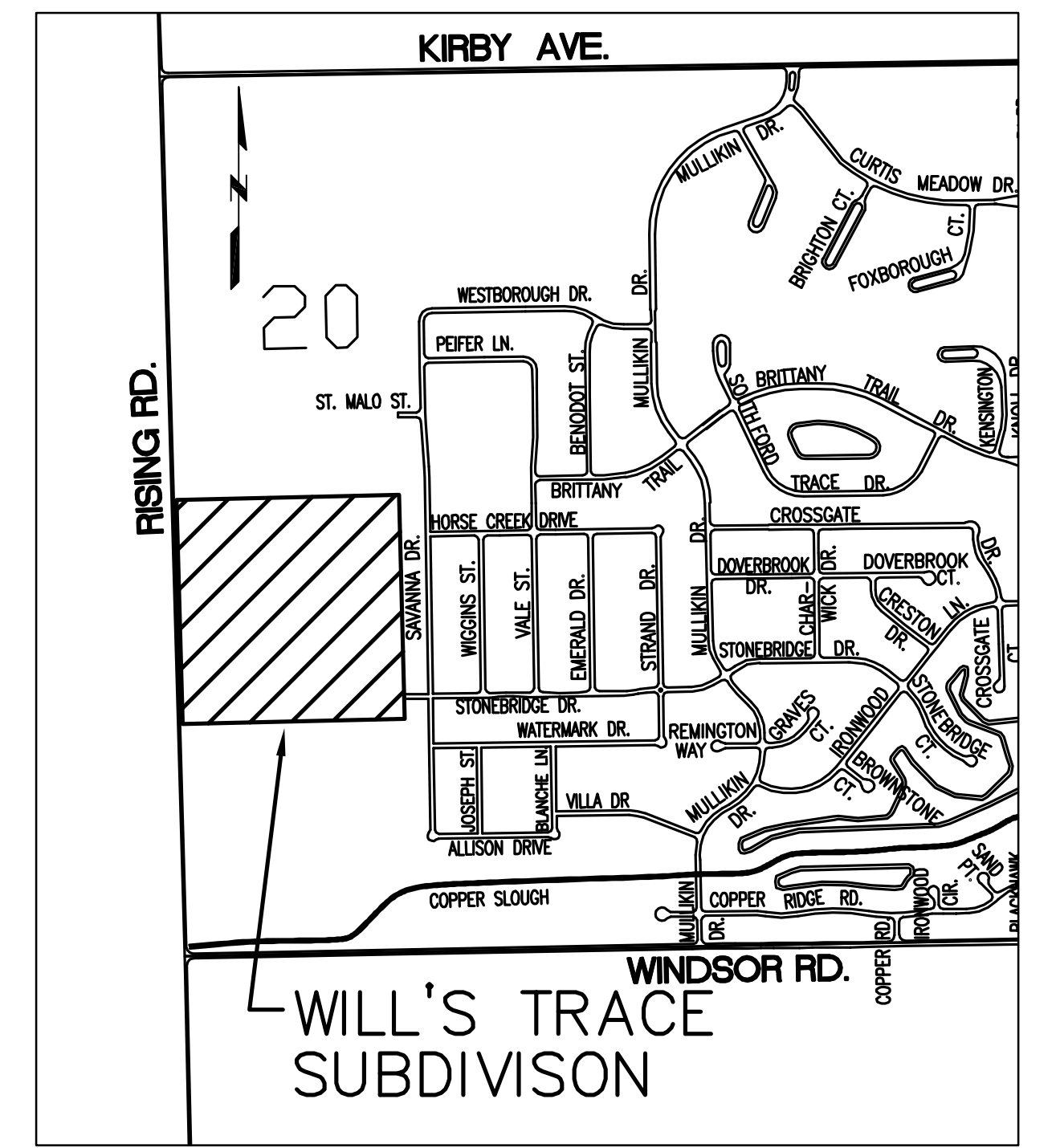
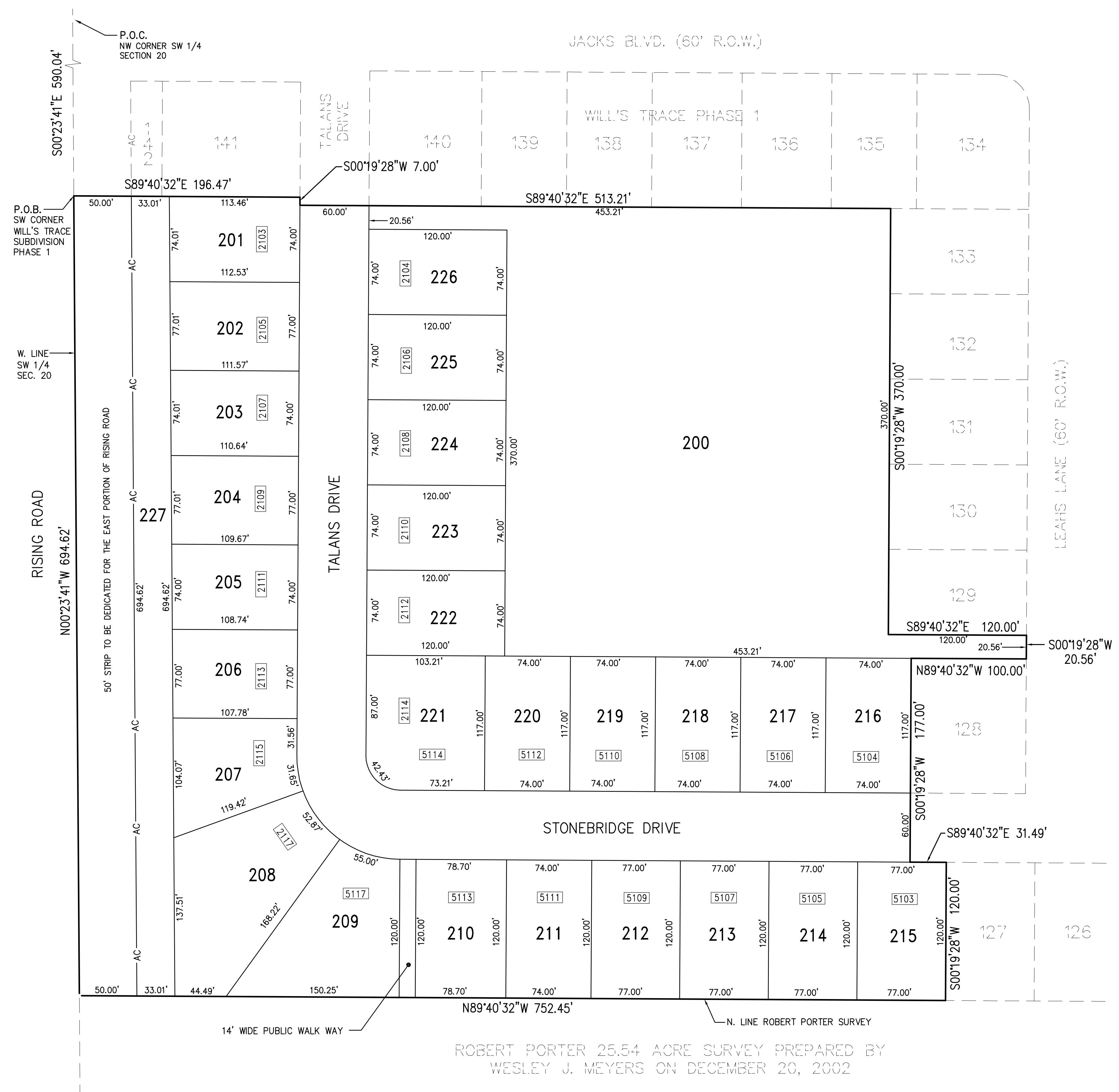


WILL'S TRACE SUBDIVISION PHASE 2

A PART OF THE NW 1/4 OF THE SW 1/4 OF SECTION 20,
TOWNSHIP 19 NORTH, RANGE 8 EAST OF THE THIRD PRINCIPAL MERIDIAN
CHAMPAIGN COUNTY, ILLINOIS



SITE LOCATION MAP
NOT TO SCALE

FOR INFORMATION CONTACT:
BILL PEIFER
SIGNATURE HOMES
(217) 355-1202 Phone
(217) 355-3806 Fax
bill@signaturehomes.ws

OWNER/DEVELOPER:
WILL'S TRACE, LLC
4120 BELMONT POINT
CHAMPAIGN, IL 61822
(217) 355-8922

ENGINEER/SURVEYOR:
FARNSWORTH GROUP, INC.
1819 SOUTH NEIL STREET, SUITE F
CHAMPAIGN, ILLINOIS 61820
(217) 352-7408

ROBERT PORTER 25.54 ACRE SURVEY PREPARED BY
WESLEY J. MEYERS ON DECEMBER 20, 2002

Farnsworth GROUP
1819 S. NEIL STREET, SUITE F
CHAMPAIGN, ILLINOIS 61820
(217) 352-7408 / (217) 352-7409 Fax
www.f-w.com

**WILL'S TRACE SUBDIVISION
PHASE 2
CHAMPAIGN, ILLINOIS**

SALES PLAT

Drawn: TP	Date: 08-13-07	Sheet No.:	1 OF 1
Checked: _____	Book No.: CU20	Project No.:	106584