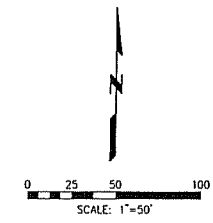


LAKE FALLS SUBDIVISION PHASE 1

A REPLAT OF PART OF LOT 10 OF PHOENIX BAKER'S SUBDIVISION OF SECTION 1,
TOWNSHIP 18 NORTH, RANGE 8 EAST OF THE THIRD PRINCIPAL MERIDIAN, CHAMPAIGN COUNTY, ILLINOIS

LOT CURVE DATA TABLE						
CURVE	LOT	RADIUS	ARC LENGTH	CHORD LENGTH	CHORD BEARING	DELTA
C1	104	60.00'	94.25'	84.85'	N43°50'50"E	90°00'00"
C2	105	60.00'	80.19'	74.36'	N39°26'31"W	76°34'40"
C3	106	60.00'	61.19'	58.57'	S73°03'19"W	58°25'41"
C4	107	60.00'	47.12'	45.92'	S21°20'39"W	44°59'38"
C5	111	467.00'	21.58'	21.58'	N89°49'44"W	2°38'53"
C6	112	467.00'	189.58'	188.28'	N76°52'31"W	2°31'53"
C7	112	270.00'	12.08'	12.08'	N21°17'49"E	2°33'51"
C8	113	270.00'	92.25'	91.80'	N10°13'36"E	19°34'36"
C9	114	270.00'	7.50'	7.50'	N00°21'26"W	1°35'28"
C10	115	60.00'	49.27'	47.90'	N23°31'34"E	47°03'08"
C11	116	60.00'	57.78'	55.57'	N27°35'19"W	55°10'38"
C12	117	60.00'	63.33'	60.43'	N85°24'53"W	60°28'29"
C13	118	60.00'	59.79'	57.35'	S35°47'53"W	57°05'58"
C14	119	60.00'	82.64'	78.28'	S32°12'38"E	78°55'04"
C15	120	210.00'	3.00'	3.00'	S00°44'39"E	0°49'03"
C16	121	210.00'	83.99'	83.43'	S11°07'18"W	22°54'52"
C17	121	533.00'	33.75'	33.74'	N69°14'34"W	3°37'41"
C18	122	467.00'	8.86'	8.86'	S67°58'20"E	1°05'15"
C19	124	500.00'	86.64'	86.53'	S72°23'34"E	9°55'43"
C20	125	500.00'	90.12'	90.00'	S82°31'15"E	10°19'38"
C21	126	500.00'	30.27'	30.26'	S89°25'07"E	3°28'07"
C22	126	620.00'	37.53'	37.53'	N89°25'07"W	3°28'07"
C23	125	620.00'	111.75'	111.60'	N82°31'15"W	10°19'38"
C24	124	620.00'	107.44'	107.30'	N72°23'34"W	9°55'43"
C25	122	347.00'	6.59'	6.59'	N67°58'20"W	1°05'15"

LOT 10



- LEGEND:**
- BOUNDARY OF SUBDIVISION
 - - - COLLINEAR 25' FRONT BUILDING SETBACK LINE AND PROPOSED GENERAL UTILITY AND DRAINAGE EASEMENT UNLESS NOTED OTHERWISE
 - - - PROPOSED GENERAL UTILITY AND DRAINAGE EASEMENT
 - 5/8" IRON ROD WITH PLASTIC CAP STAMPED "FARNSWORTH GROUP"
 - IRON ROD WITH PLASTIC CAP STAMPED "FARNSWORTH GROUP" IN CONCRETE
 - - - SECTION LINE
 - N-R NON-RADIAL
 - R RADIUS
 - L ARC LENGTH
 - C CHORD LENGTH
 - CB CHORD BEARING

Farnsworth GROUP
 1819 S. NEIL STREET, SUITE F
 CHAMPAIGN, ILLINOIS 61820
 (217) 352-7408 / (217) 352-7409 Fax
 www.f-w.com

LAKE FALLS SUBDIVISION
 PHASE 1
 SAVOY, ILLINOIS

FINAL PLAT

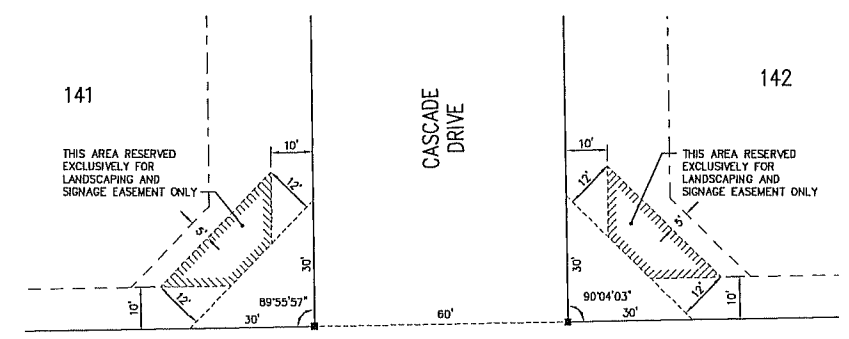
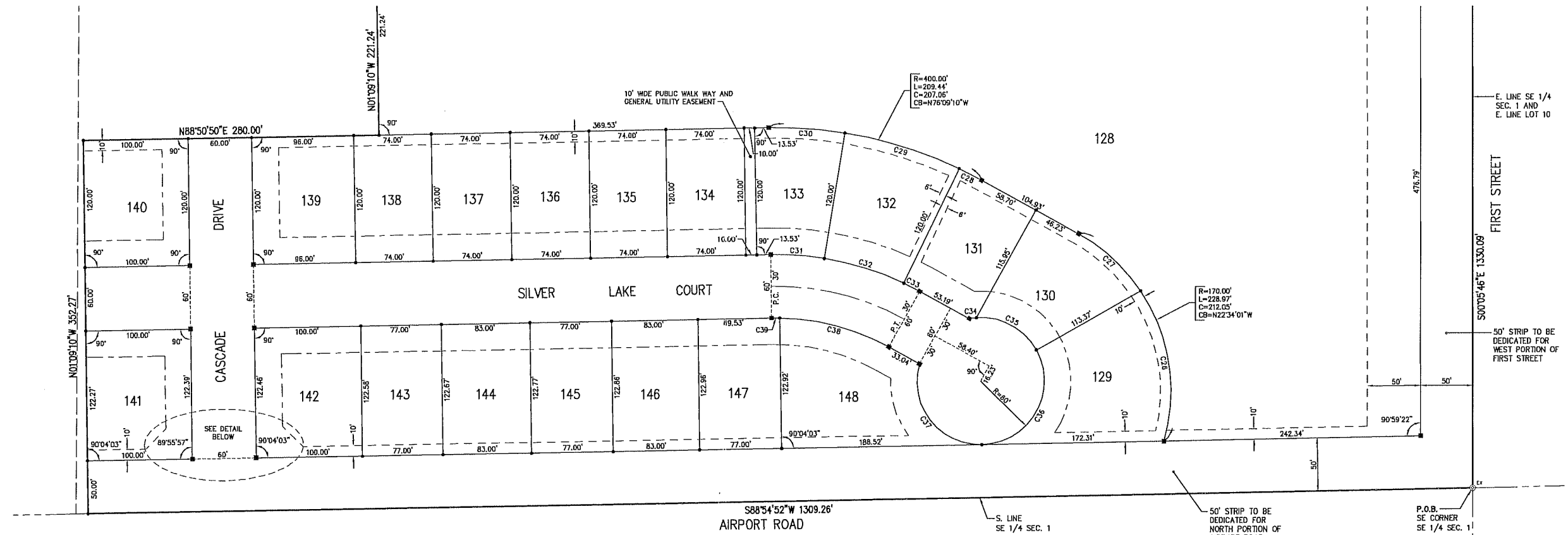
Drawn: CDG Date: 10-25-06 Book No.: CU 28 Sheet No.: 2 OF 3
 Designed: - Checked: TP Project No.: 106224

SE 1/4, SEC. 1, T18N, R8E, 3 P.M.

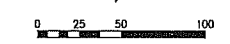
I:\Projects\10-25-06\106224 - Lake Falls Phase 1 Final Plat.dwg | DATE: 11/7/2006 | TIME: 10:46:15 AM |

LAKE FALLS SUBDIVISION PHASE 1

A REPLAT OF PART OF LOT 10 OF PHOENIX BAKER'S SUBDIVISION OF SECTION 1,
TOWNSHIP 18 NORTH, RANGE 8 EAST OF THE THIRD PRINCIPAL MERIDIAN, CHAMPAIGN COUNTY, ILLINOIS



DETAIL
NOT TO SCALE



LEGEND:

- BOUNDARY OF SUBDIVISION
- - - COLLINEAR 25' FRONT BUILDING SETBACK LINE AND PROPOSED GENERAL UTILITY AND DRAINAGE EASEMENT UNLESS NOTED OTHERWISE
- - - PROPOSED GENERAL UTILITY AND DRAINAGE EASEMENT
- 5/8" DIAMETER BY 30" LONG IRON ROD WITH PLASTIC CAP STAMPED "FARNSWORTH GROUP"
- 5/8" DIAMETER BY 30" LONG IRON ROD WITH PLASTIC CAP STAMPED "FARNSWORTH GROUP" IN CONCRETE
- ⊕ EX EXISTING IRON PIPE WITH CAP OVER STONE
- SECTION LINE
- N-R NON-RADIAL
- R RADIUS
- L ARC LENGTH
- C CHORD LENGTH
- CB CHORD BEARING

LOT CURVE DATA TABLE						
CURVE	LOT	RADIUS	ARC LENGTH	CHORD LENGTH	CHORD BEARING	DELTA
C26	129	170.00'	148.10'	143.46'	N08°56'17"W	49°54'52"
C27	130	170.00'	80.87'	80.11'	N47°31'28"W	27°15'28"
C28	131	400.00'	23.99'	23.99'	N82°52'16"W	3°26'11"
C29	132	400.00'	113.20'	112.82'	N72°41'46"W	16°12'50"
C30	133	400.00'	72.25'	72.16'	N85°58'41"W	10°20'59"
C31	133	280.00'	50.58'	50.51'	S85°58'41"E	10°20'59"
C32	132	280.00'	79.24'	78.97'	S72°41'46"E	16°12'50"
C33	131	280.00'	16.79'	16.79'	S82°52'16"E	3°26'11"
C34	131	60.00'	6.84'	6.84'	N82°30'43"E	8°31'50"
C35	130	60.00'	87.98'	64.36'	S61°48'26"E	64°53'52"
C36	129	60.00'	123.84'	103.00'	S29°48'15"W	118°15'31"
C37	148	60.00'	111.68'	86.24'	N37°44'36"W	106°38'47"
C38	148	220.00'	107.72'	106.65'	N75°10'50"W	28°03'19"
C39	147	220.00'	7.47'	7.47'	S89°49'10"W	1°56'41"

Farnsworth GROUP

1819 S. NEIL STREET, SUITE F
CHAMPAIGN, ILLINOIS 61820
(217) 352-7408 / (217) 352-7409 Fax
www.fw.com

Drawn: **CDG** Date: **01-12-07**

Designed: - Checked: **TP**

LAKE FALLS SUBDIVISION
PHASE 1
SAVOY, ILLINOIS

FINAL PLAT

Book No: **CJ 28** Sheet No: **3** OF **3**

Project No: **106224**

I:\projects\18-000\106224 - Lake Falls Phase 1 Final Plat.dwg | DATE: 1/12/2007 | TIME: 3:31:38 pm |