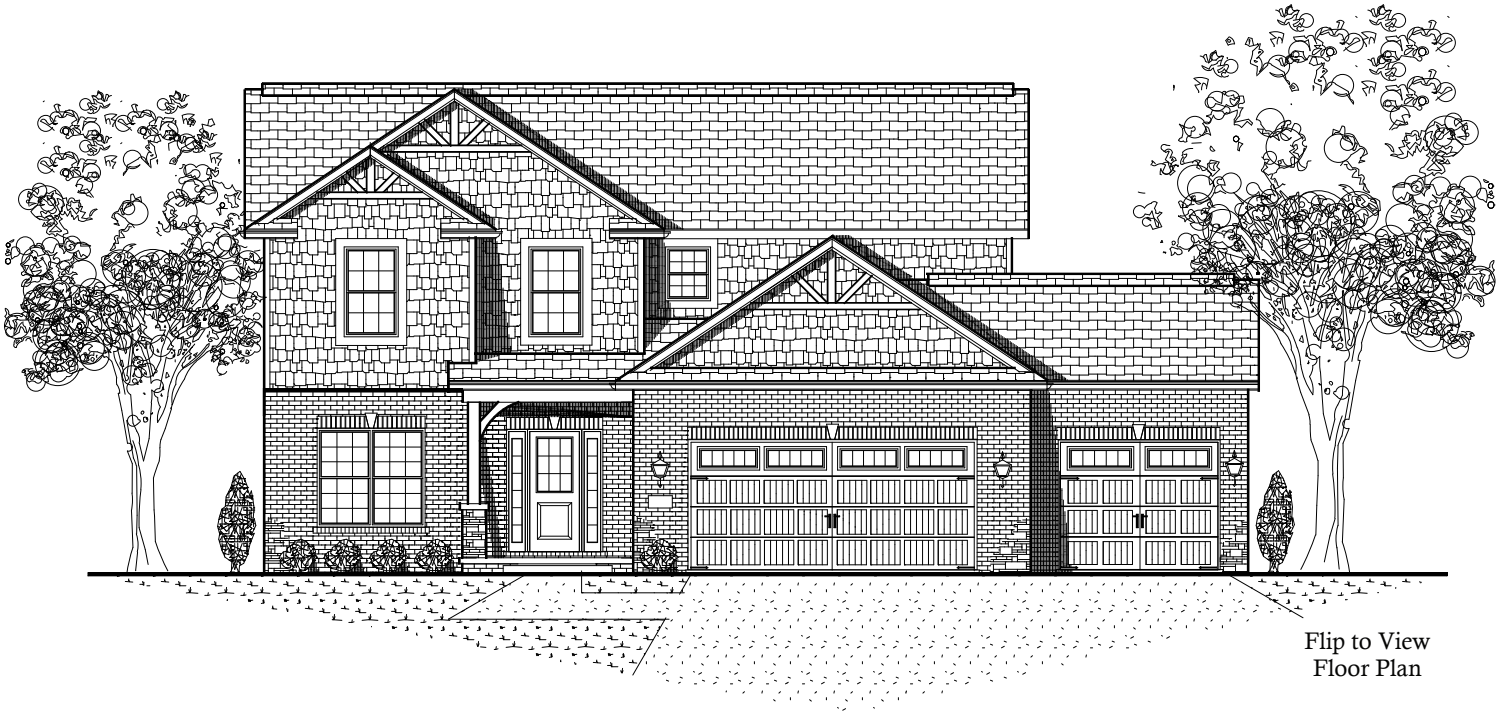


Custom Plan



Lot 612 Sommer Place
6515 W. Callahan Court, Edwards, IL
\$349,900

Home Details

Structure

- 3086 Total Finished Square Footage
- Finished basement
- 5 Bedrooms, 3 1/2 Baths
- 3 Car Garage
- 9' Tall First Floor Walls

Kitchen Highlights

- Stainless Steel Appliances
- Maple Cabinets
- Kitchen Island
- Kitchen Pantry

Other Highlights

- Drop Zone Off the Garage
- Flex Room off Foyer
- Second Floor Laundry
- Finished Rec Room in Basement
- Master Suite w/Large Walk-in Closet

Built Smart

Energy Efficient Design

- High Efficiency HVAC Equipment
- 90 % Efficient Direct Vent Water Heater
- Low E Windows
- 2 x 6 Exterior Walls with R21 Insulation
- Energy Star Appliances
- Programmable Thermostat
- R49 Ceiling Insulation
- Air Sealed Building Envelope

Smart Construction Details

- Water Tight Drainage Plane Design
Including:
 - Exterior Door Sill Pans
 - Vycor Window Flashing with Beveled Cedar Sill's

Ask for Matt Moore – Builder
7227 N. University Avenue. Peoria, IL 61615
Office: 309.693.6179 Mobile: 309.275.4014
www.signaturehomes.ws