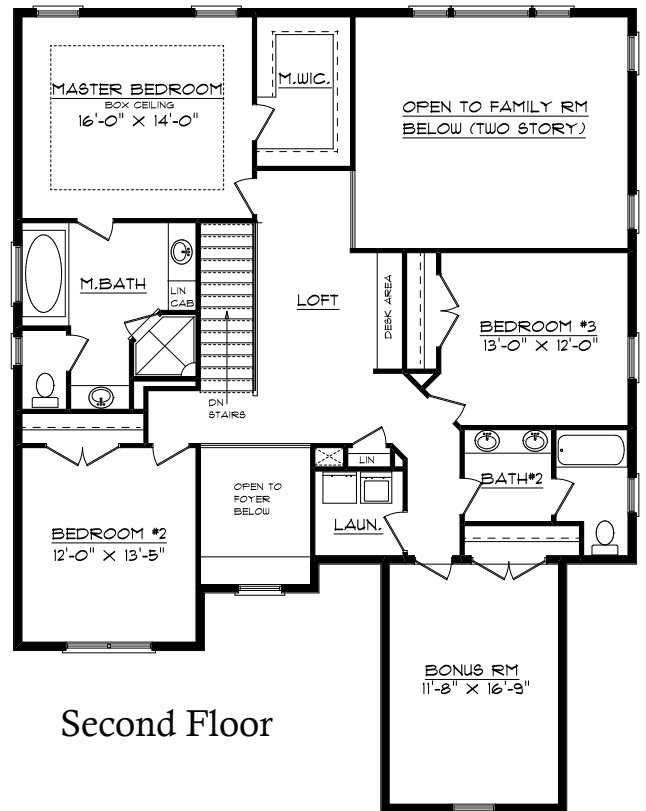
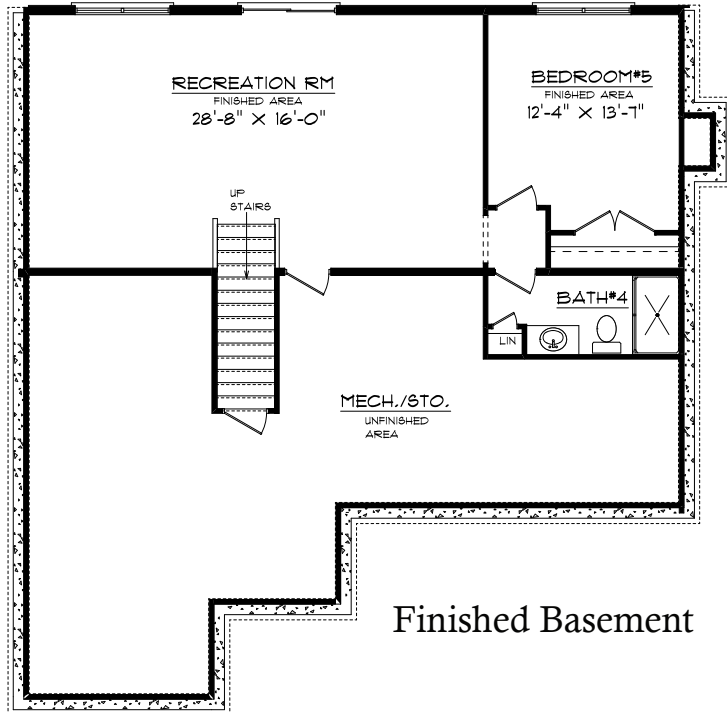
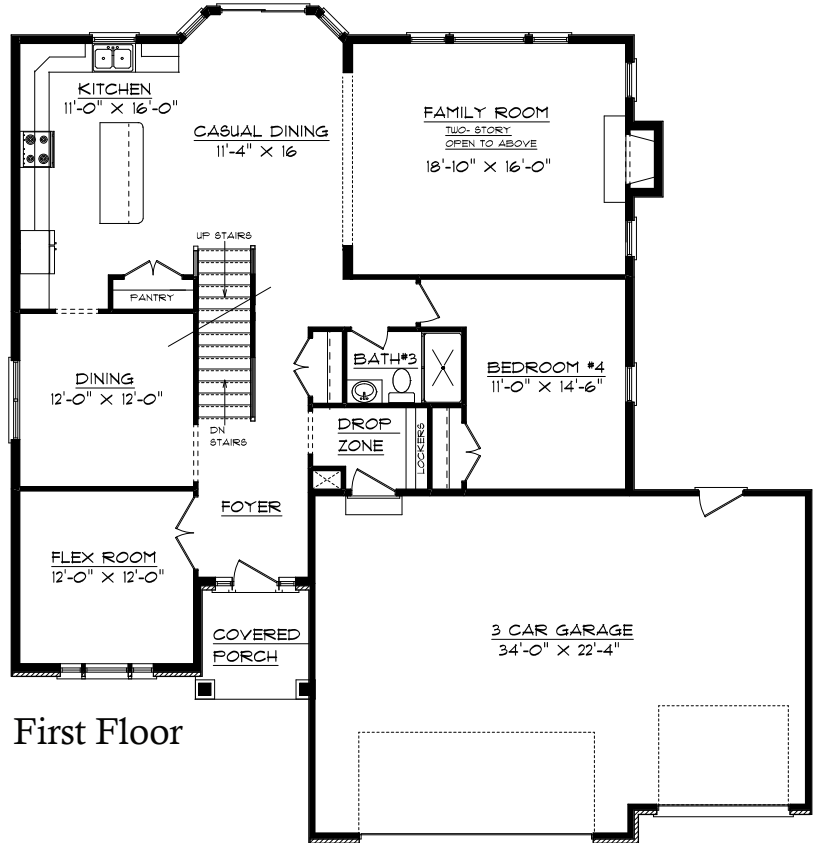


# Lot 421 Sommer Place 6915 N. Water Oak Dr., Edwards, IL

## PLAN SUMMARY

<b>First Floor</b>	1627 Sq.Ft.
<b>Second Floor</b>	1540 Sq.Ft.
<b>Finished Basement</b>	752 Sq.Ft.
<b>TOTAL Finished</b>	3919 Sq.Ft.



Note: Rendering is artist's interpretation of this home and does not necessarily represent floor plans and elevations. Please refer to actual plans for more details. Plans are property of Signature Homes.